

IQeye 5 Series™

Part of the IQeye BASIC LINE of Network Surveillance Products



IQeye 540SI, 541SI and 542SI Quick Install Guide

IQinVision 

When you can't afford to miss a thing.

IQeye Partner:

**SINGAPORE
COMM**

www.singcomm.com.sg

1. Plug the IQeye camera into the network.

a. If using PoE, plug your camera into an IEEE 802.3af PoE injector or switch.

b. If using direct power, connect a 12-24 VDC or 24 VAC power supply to the supplied terminal block.



IQeye 5 Series Power Options

NOTE: Power supply polarity is not important.

2. IQeye 5 Series field of view and focus adjustments can be performed using a browser or analog monitor.

To focus using the analog video out connect a field service monitor to the “Video Out” (RCA Connector) of the IQeye 5 Series camera. The analog video will be available for 30 minutes or until the first digital image is requested via the Ethernet port.

IQeye Partner:

**SINGAPORE
COMM**
www.singcomm.com.sg



IQeye 5 Series RCA Connection

Open the Iris adjustment on the lens to full open, and move the focus ring on the lens until the image is in focus.

3. If the IQeye 5 Series field of view and focus adjust will be performed using a browser, insert the IQtools CD into the CD drive of the PC. Once the CD starts, you can run IQfinder either from the CD by clicking “Scan for IQeye cameras on my network” or you can install IQfinder on your local machine by selecting “Install IQfinder”.

IQeye Partner:

**SINGAPORE
COMM**

www.singcomm.com.sg



IQtools CD

4. Click “Scan for IQeye cameras on my network” to find IQeye cameras. The detected cameras will be displayed in the IQfinder window. Highlight a camera from the list and click “Assign IP” to edit the selected cameras IP settings.

IQeye Partner:

**SINGAPORE
COMM**

www.singcomm.com.sg

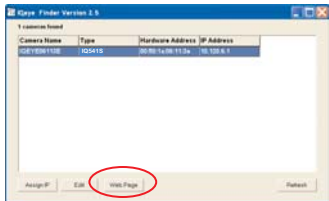
5. The “Assign IP” window allows the IP address, Subnet and Gateway of the camera to be changed. It also allows the camera to be configured for DHCP. Click the “Apply” button after making the desired changes



IQfinder - Assign IP Address

6. Note: *Changing between a static IP address and DHCP will require the camera to be rebooted.*

To view a camera “Double click” a camera entry or highlight a camera in the list and click the “Web Page” button. The “Live” page will be displayed through your default browser (IE recommended). It’s also possible to open Internet Explorer, and enter the IP address of the IQeye camera in the address field of the browser.



IQfinder - Web Page

7. To perform further configuration of the camera click on the “**Setup**” tab.

***Note:** The default username is “**root**” and the default password is “**system**”.*

For further information see the IQeye documentation on the installation CD or at <http://www.iqeye.com>.

***IQinVision, Inc.
33122 Valle Road
San Juan Capistrano, CA 92675-4853 USA***

Part Number: **901-0180 Rev A**

IQeye Partner:
**SINGAPORE
COMM**
www.singcomm.com.sg