

IQeye 4 Series™

Part of the IQeye Basic Line of Network Surveillance Products



IQeye 040S, 041S and 042S Quick Install Guide

IQinvision 

When you can't afford to miss a thing.

IQeye Partner:
**SINGAPORE
COMM**
www.singcomm.com.sg

1. Plug the IQeye camera into the network.

2. The IQeye 040S, 041S and 042S cameras are powered via the Ethernet using an IEEE 802.3af power source.



IQeye4 Series Cameras

Power Source Warning:

Note that your IQeye 4 Series camera can only be powered with a standard IEEE 802.3af PoE injector or PoE switch. It CANNOT BE POWERED with DC, AC or with the IQinVision proprietary IQpoet™ injector.

IQeye Partner:

**SINGAPORE
COMM**
www.singcomm.com.sg

3. IQeye 4 Series field of view and focus adjustment must be performed using a browser to view the camera image.

Insert the **IQtools CD** into the CD drive of the PC. Once the CD autostarts, you can either run IQfinder right off the CD by clicking the “Scan for IQeye cameras on my network” option or you can install IQfinder on your local machine by selecting the “Install IQfinder” option.

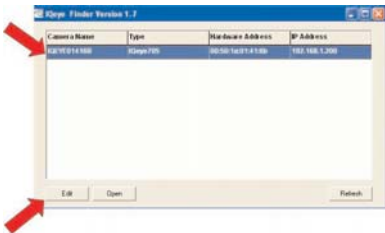


4. Click the “**Scan for IQeye cameras on my network**” button to find IQeye cameras.



The detected cameras will be displayed in the IQfinder window.

Highlight a camera from the list and click the “**Edit**” button to edit the selected camera’s IP settings.



5. The Edit window allows the Name, IP address, Subnet, and Gateway of the camera to be changed. It also allows the camera to be configured for DHCP. Click the **“Apply”** button after making the desired changes.

Note: Changing between a static IP address and DHCP will require the camera to be rebooted.

IQeye Finder Version 1.6

Name: IQEYE014168

Type: IQeye705

HW Addr: 00:50:1a:01:41:6b

Obtain an IP address automatically via DHCP

Use the following IP address

IP Address: 192.168.1.200

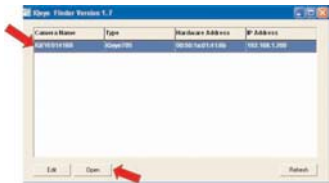
Subnet: 255.255.255.0

Gateway: 192.168.1.1

Apply Cancel

To view a camera **“Double click”** on a camera entry in the list or click the **“Open”** button. The **“Live”** page will be displayed.

Note: It's also possible to open Internet Explorer, and enter the IP address of the IQeye device in the address field of the browser.



6. To perform further configuration of the camera click on the “**Setup**” tab.

*Note: The default username is “**root**” and the default password is “**system**”.*

For further information see the IQeye documentation on the installation CD or at <http://www.iqeye.com>.

**IQinVision, Inc.
33122 Valle Road
San Juan Capistrano, CA 92675-4853 USA**

Part Number: **901-0088 Rev A**

IQeye Partner:
**SINGAPORE
COMM**
www.singcomm.com.sg