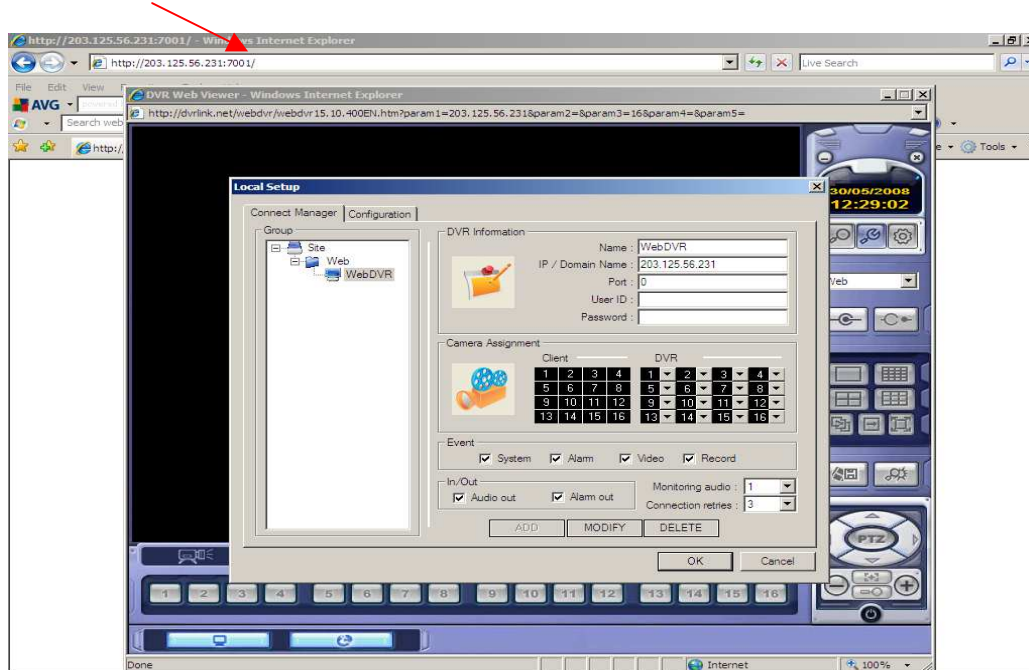


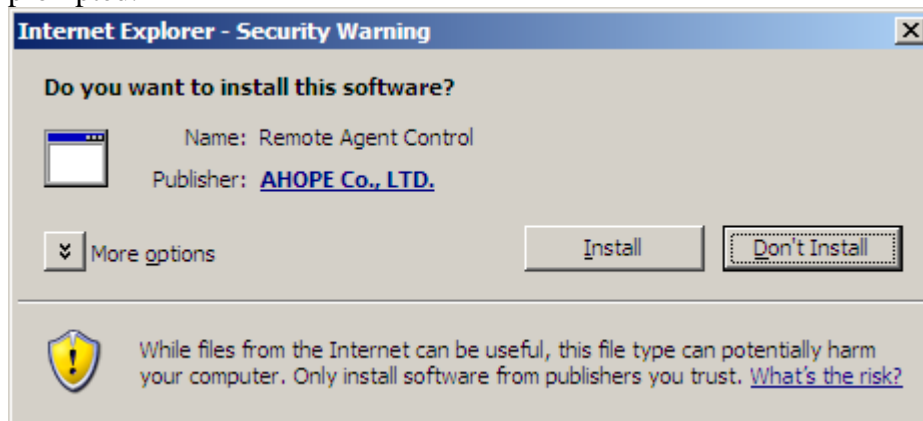
SVR2000 DVR Web Remote Viewing Connection Procedure

Before proceeding with the connection for web viewing, go to Tools/Internet Options/Security/Custom level of your Internet Explorer to enable ActiveX in order to display the DVR viewer page.

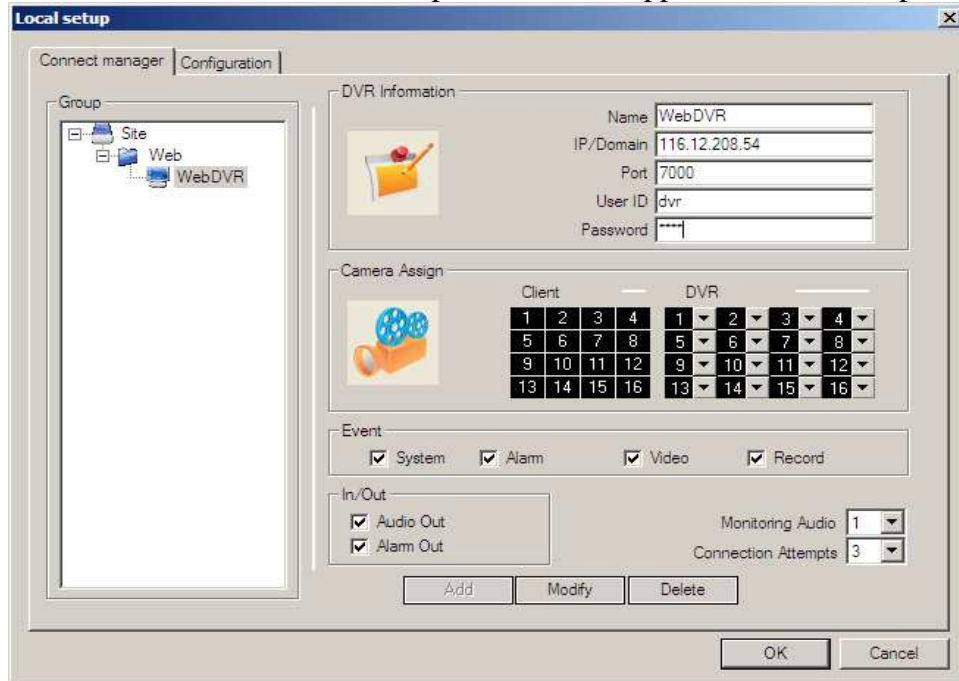
1. At the browser address bar, enter the address: <http://116.12.208.54:7001>.



2. Click to allow popup, activeX & DVR application installation as & when prompted.

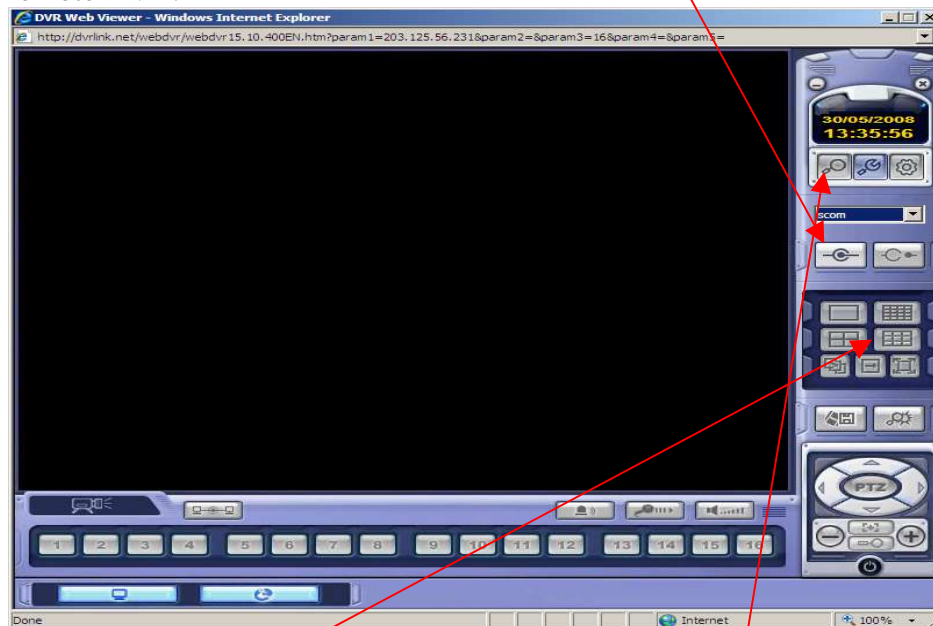


3. A similar DVR screen as per follow will appear when the setup is successful.



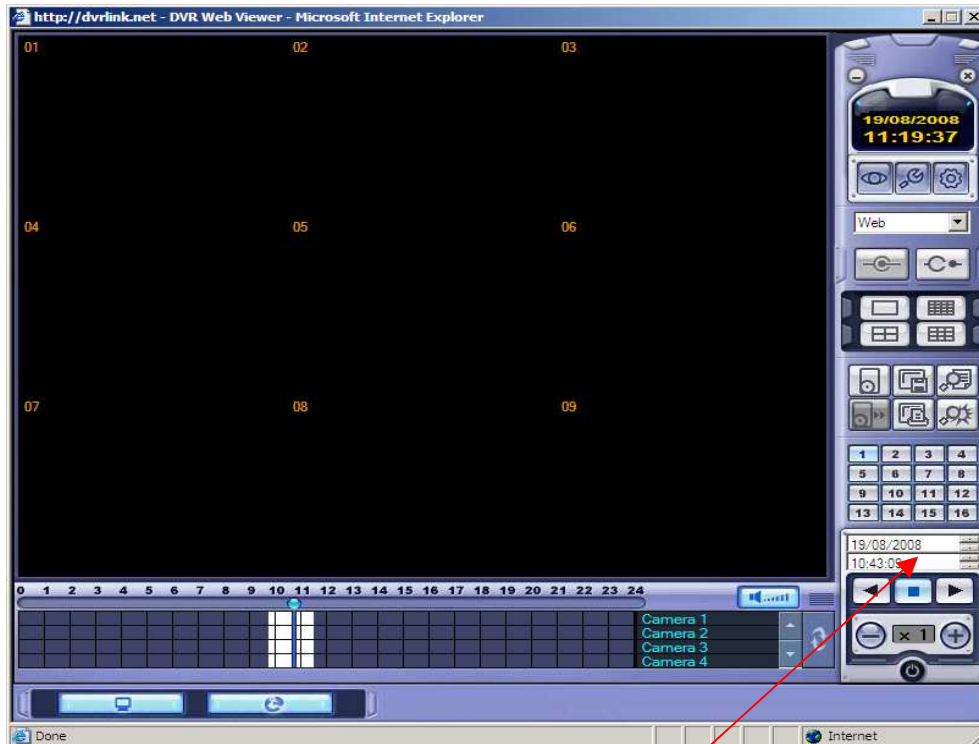
4. Enter port: 7000, User ID: dvr & access password: 1234. Click on Modify to change the setting. Click “OK” to exit.

5. On the following screen, click on the “Connect” icon to get connected to the remote DVR.



7. The camera live images will appear if connection is successful. Use the display icons to show the number of screen required.

8. To search for history record, click on the “Search” icon.



9. Select the camera as well as date & time of the recording to play back.
10. After finish viewing, click on the "Disconnect" icon to disconnect & close the browser to end.